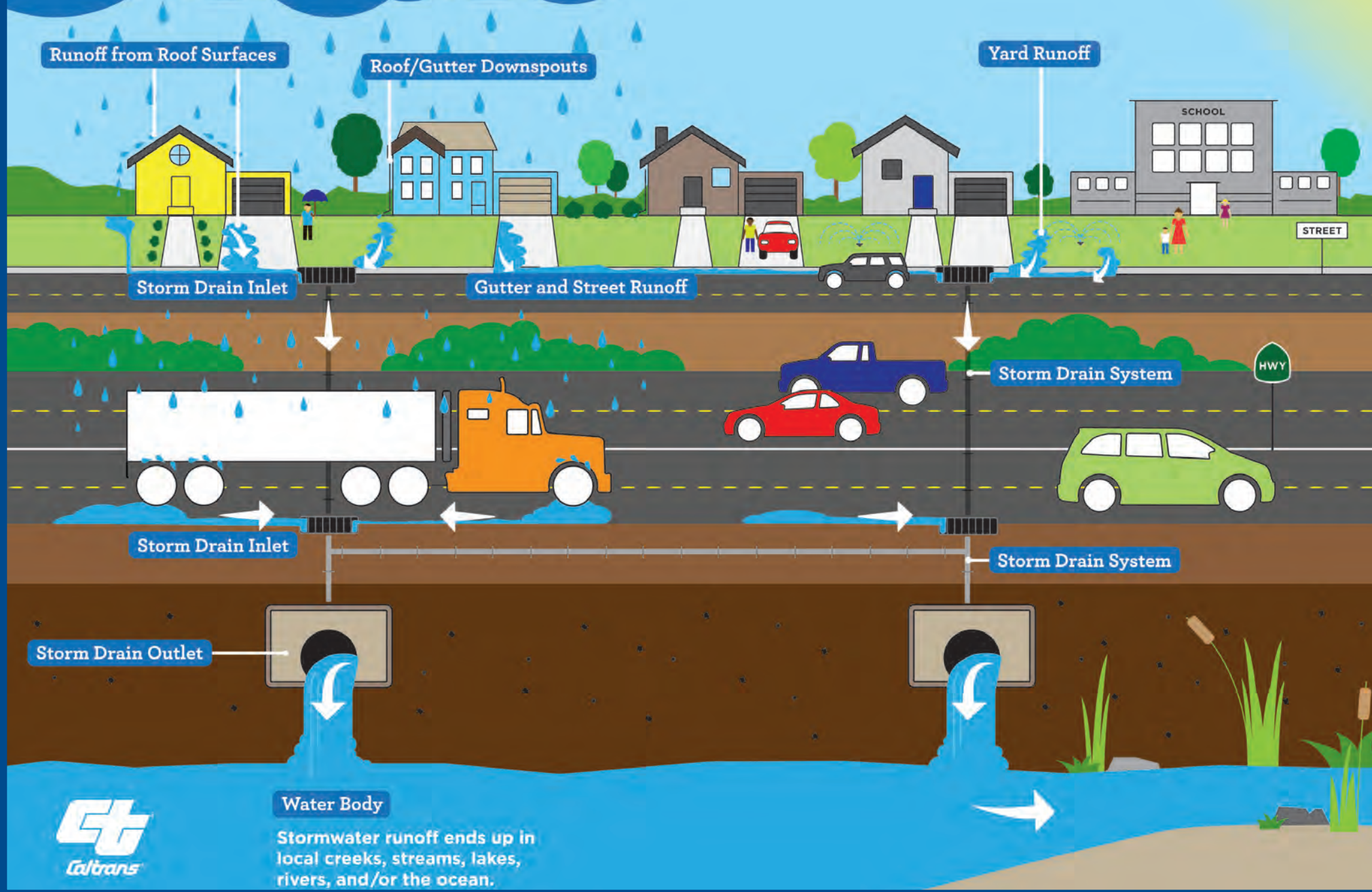


Stormwater Runoff



The Stormwater Drainage System

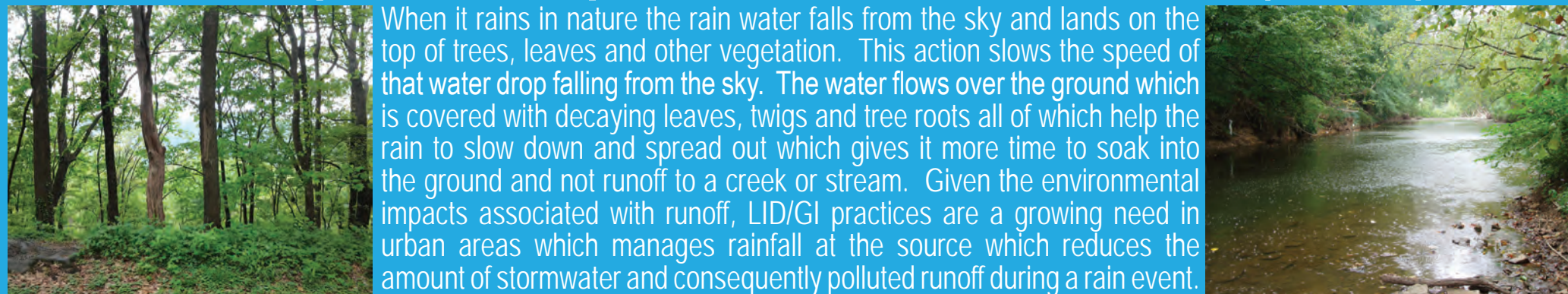
As land is developed the water that filters into the ground decreases and the need for diverting water from paved area increases. This man made Stormwater Drainage System is a series of curb inlets, open ditches, and pipes that funnel rain water directly to the nearest waterway with no filtration or treatment. It plays a vital role in urban areas to manage stormwater runoff primarily to prevent flooding.



Stormwater picks up pollution as it flows over the ground and other paved areas and carries these items into the Stormwater Drainage System. This polluted runoff includes oil/grease from roads & parking lots, litter/trash from people, and eroded soil from bare areas in yards.



Low Impact Development / Green Infrastructure (LID/GI)



When it rains in nature the rain water falls from the sky and lands on the top of trees, leaves and other vegetation. This action slows the speed of that water drop falling from the sky. The water flows over the ground which is covered with decaying leaves, twigs and tree roots all of which help the rain to slow down and spread out which gives it more time to soak into the ground and not runoff to a creek or stream. Given the environmental impacts associated with runoff, LID/GI practices are a growing need in urban areas which manages rainfall at the source which reduces the amount of stormwater and consequently polluted runoff during a rain event.